

Alliance Directional Drilling Solutions Performance Review

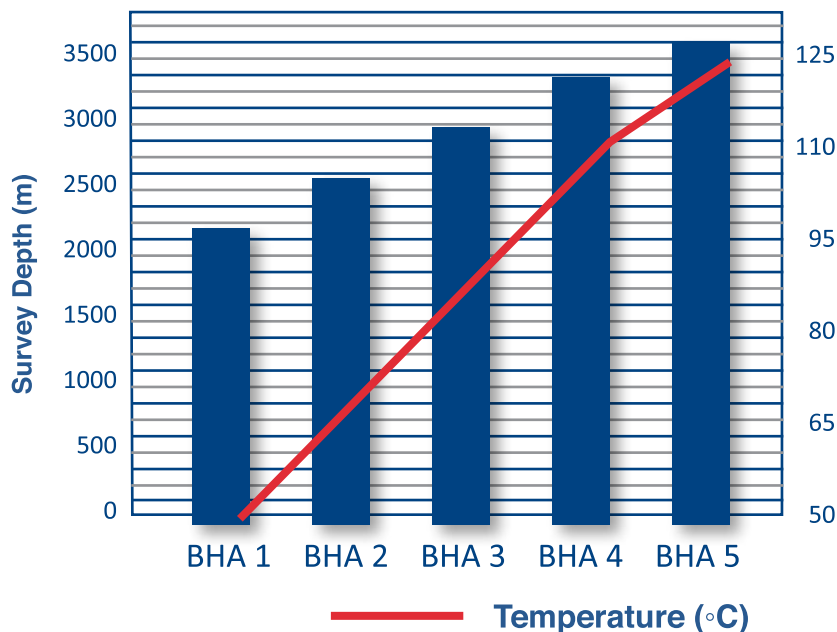
Objective: Show the benefits of the small operational footprint that the WINC PLUS system offers to the geothermal market in Turkey.

Performance: The same downhole WINC PLUS tool was used for all five BHA's required to complete the well. Both client and operator were extremely satisfied with the performance of the WINC PLUS system as it had surpassed other MWD systems in the region with having zero downtime for a long duration of operation.

Lithologies Encountered:

Quartz, Graphite, Mica, Calcite, Marble, Calcium Carbonate, Calicious Shale.

Geothermal Well in Aydin, Turkey



Country:	Turkey
Client:	Alliance Directional
Operator:	Karizma Geothermal
Field:	Aydin
Well Profile:	Re-entry Directional
Hole Size:	8.5"
Tool Size:	6.5"
Start Depth:	1890m
End Depth:	3474m
WOB:	35 KLBS
Mud Wt:	8.7 PPG
YP:	24
PV:	13
Mud Type:	Gel/Chem
BHA Type:	Conventional
Flow Rate:	450 GPM
Circulating Hours:	408.75

Sales inquires: Jeremy Lorenowicz phone: +971-50-811-6181
email: jlorenowicz@vertexdownhole.com

